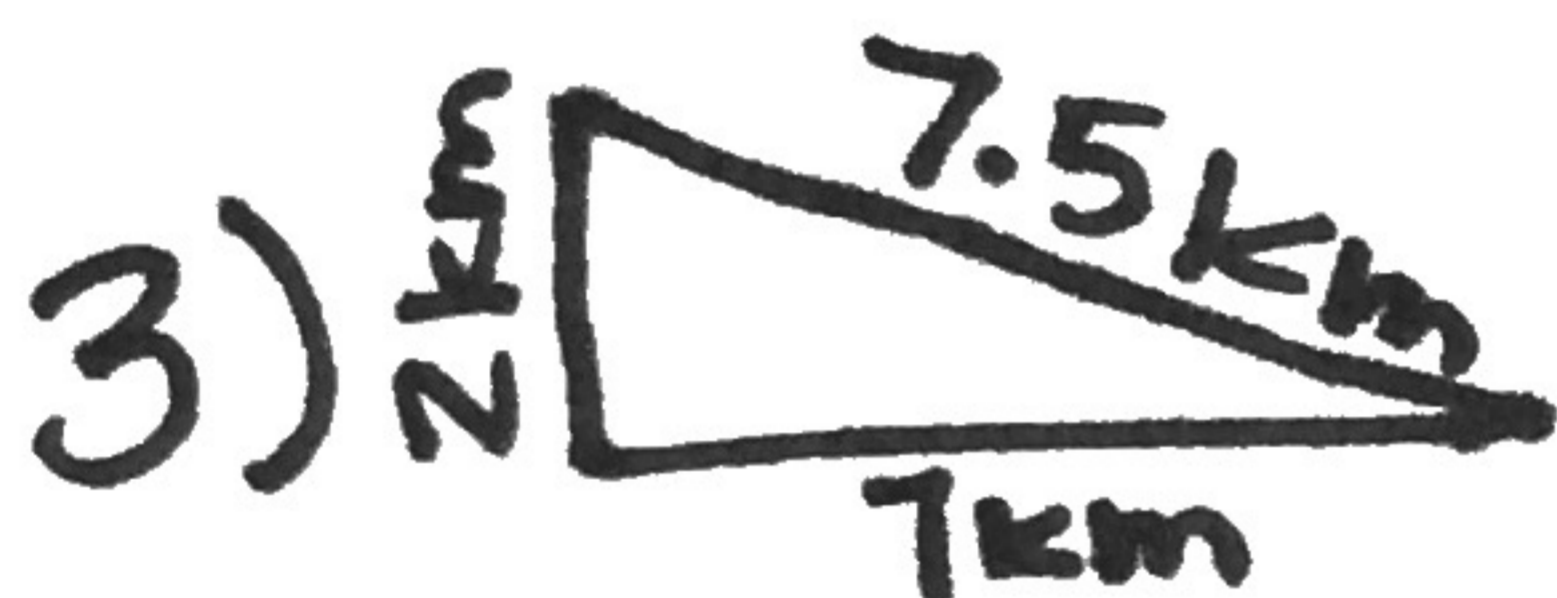
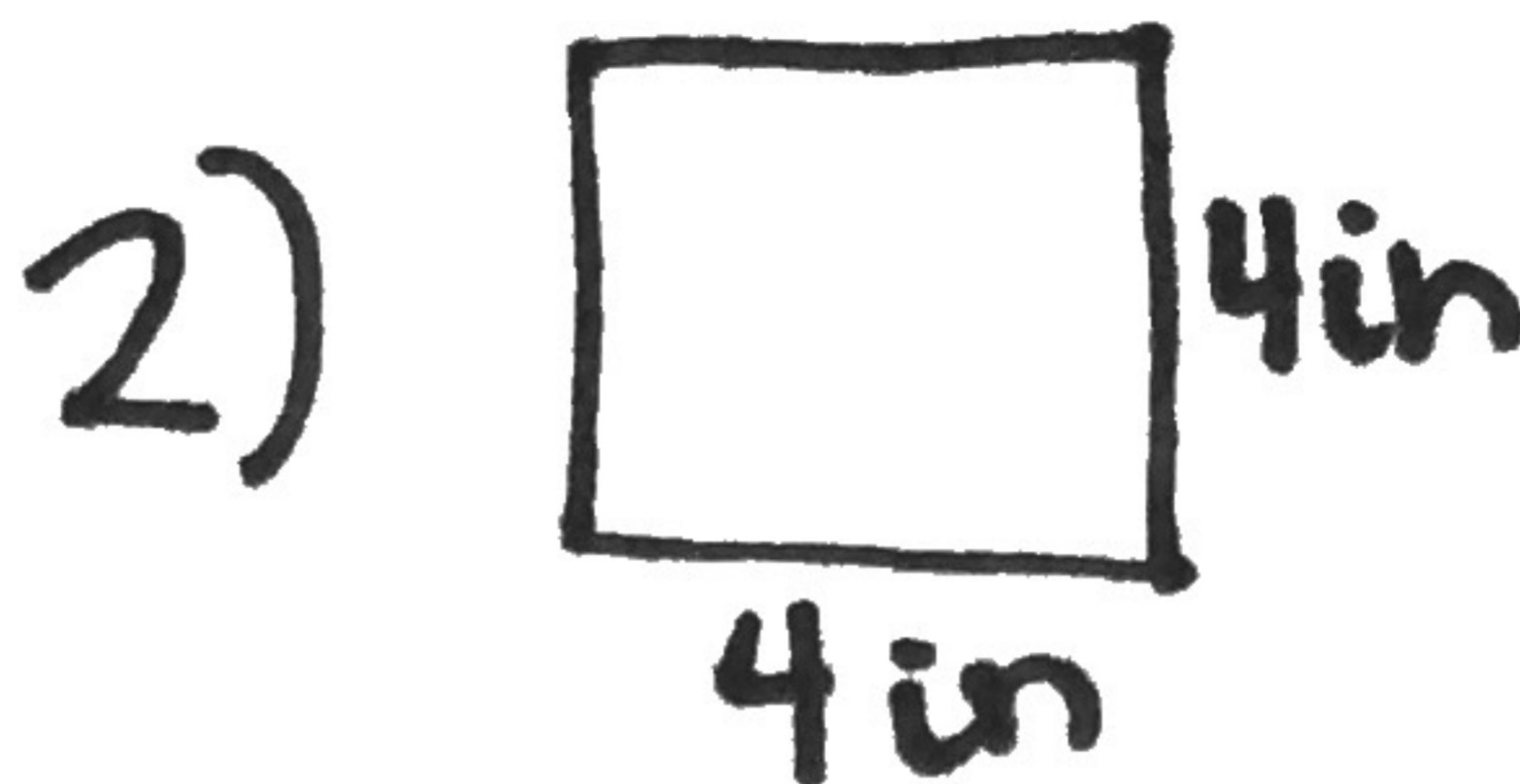
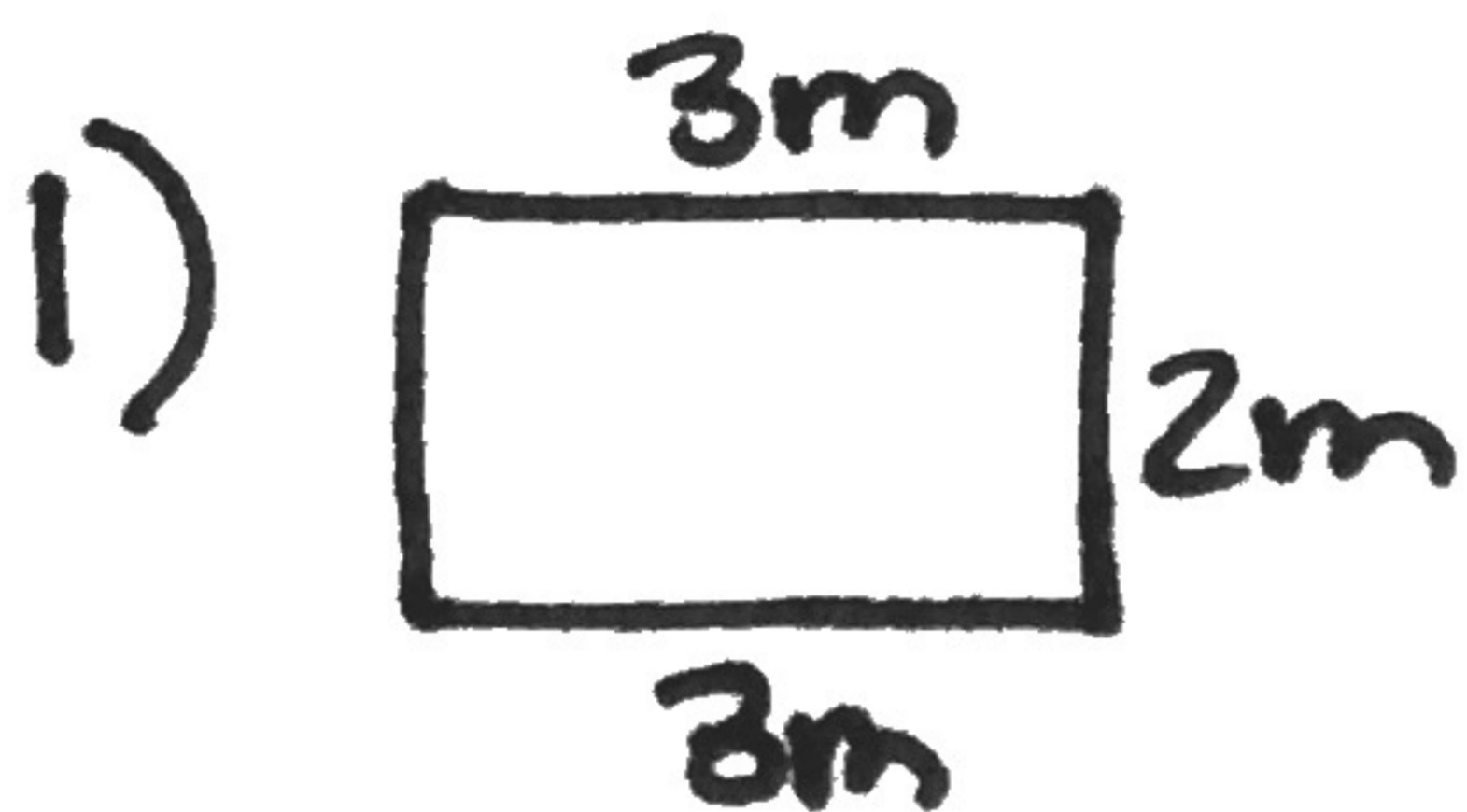


# 7<sup>th</sup> Grade Weekly Homework #5

Name: \_\_\_\_\_  
Section: \_\_\_\_\_

Find the area & perimeter! Don't forget your units!

MONDAY



Evaluate:

TUESDAY

1)  $\frac{7}{9} + \frac{5}{6}$

2)  $\frac{7}{9} - \frac{5}{6}$

3)  $\frac{7}{9} \left( \frac{5}{6} \right)$

4)  $\frac{7}{9} \div \frac{5}{6}$

Solve. Show your work.

1)  $4x + 7 = 27$

2)  $\frac{x}{3} - 2 = 4$

3)  $\frac{x}{5} + 9 = 20$

4)  $3x - 5 = 7$

Classify each number with the MOST SPECIFIC subset of real numbers.

1) 13.2

2)  $\sqrt{5}$

3) 6

4)  $\frac{3}{5}$

5) -9

6) 0

7)  $\sqrt{10}$

8)  $\sqrt{81}$