

Getting Things in Proportion

Q1. Leon

Leon has \$40.

How many Mexican Pesos can Leon buy with his dollars?

Explain how you figure this out.

Exchange Rate

\$1 US = 12

Mexican Pesos

Q2. Minna

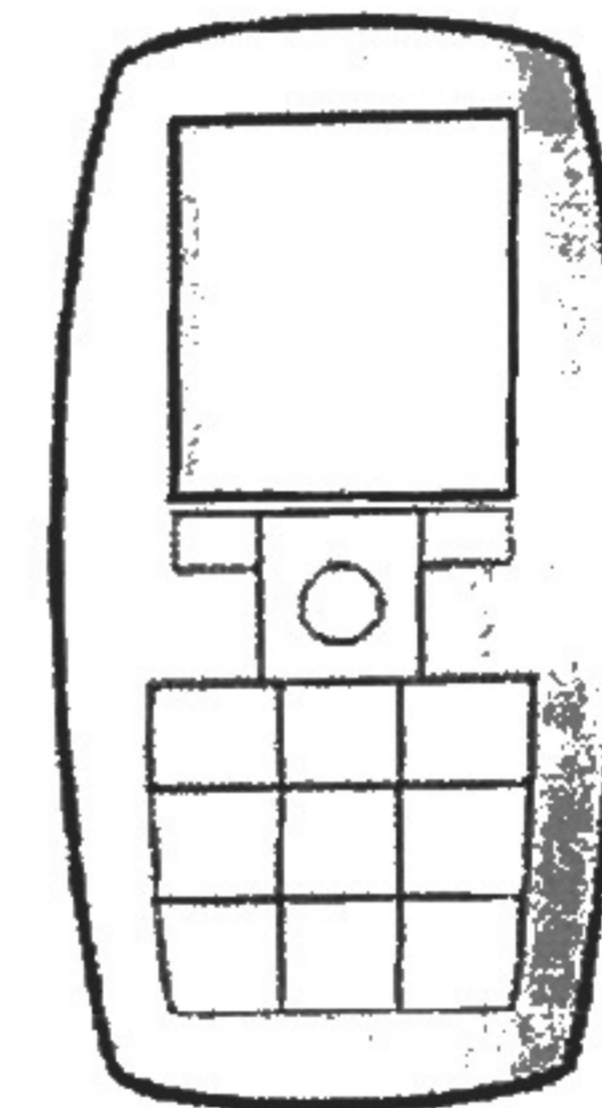
This is the call plan for Minna's cell phone:

\$15 a month plus free texts plus \$0.20 per minute of call time.

Minna made 30 minutes of calls this month and 110 texts.

How much does she have to pay the phone company?

Explain how you figure this out.



Q3. Nuala

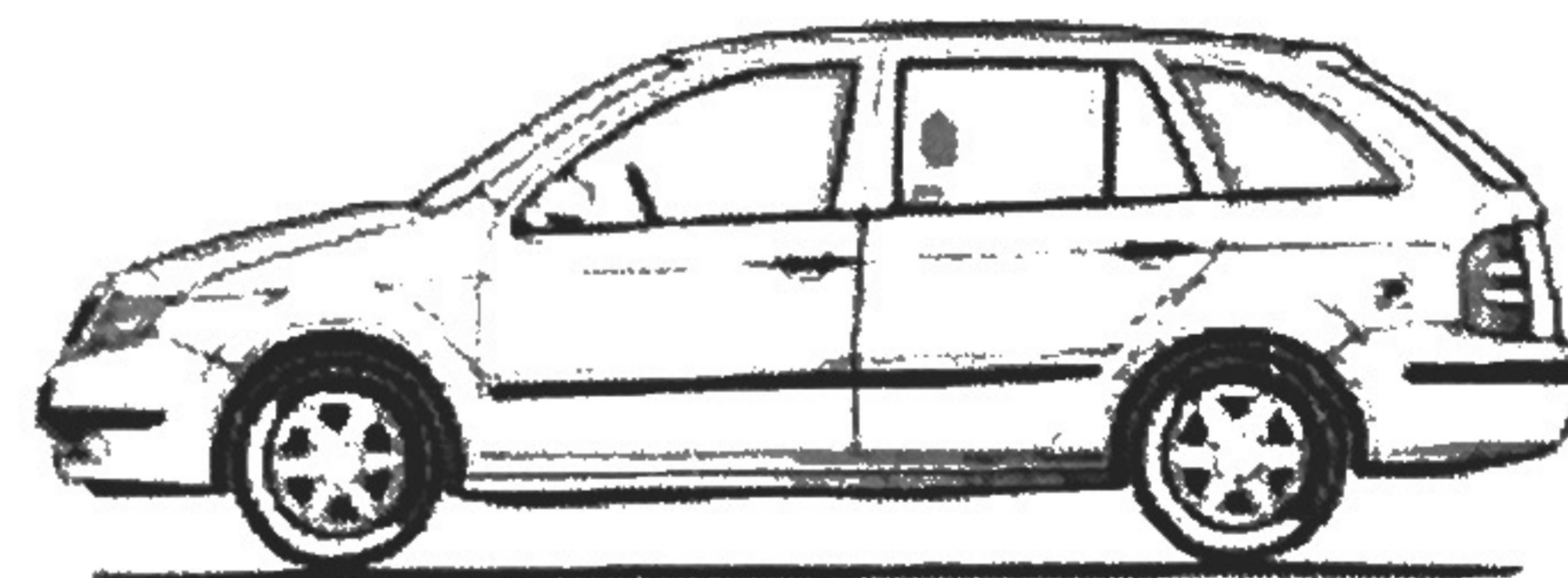
Nuala drives to her grandma's.

She drives at 20 miles per hour.

The journey takes 50 minutes.

How long would the journey take if Nuala drove at 40 miles per hour?

Explain how you figure this out.



Q4. Orhan

Orhan mixes some purple paint.

He uses three pints of blue paint for every five pints of red paint.

Orhan wants to mix more paint exactly the same color.

He has $17 \frac{1}{2}$ pints of red paint.

How much blue paint does he need?

Explain how you figure this out.



Q5. Here are two statements about the math in Q1 to Q4 above.

For each question, decide which statements are **true**. Explain your answers.

	If you double one quantity, you double the other.	The ratio: first quantity : second quantity is always the same.
Q1 Leon	Dollars, Mexican Pesos	Dollars : Mexican Pesos
Q2 Minna	Minutes, Dollars	Minutes : Dollars
Q3 Nuala	Speed, Time	Speed : Time
Q4 Orhan	Blue paint, Red paint	Blue paint : Red paint

Getting Things in Proportion (revisited)

Q1. Cherie

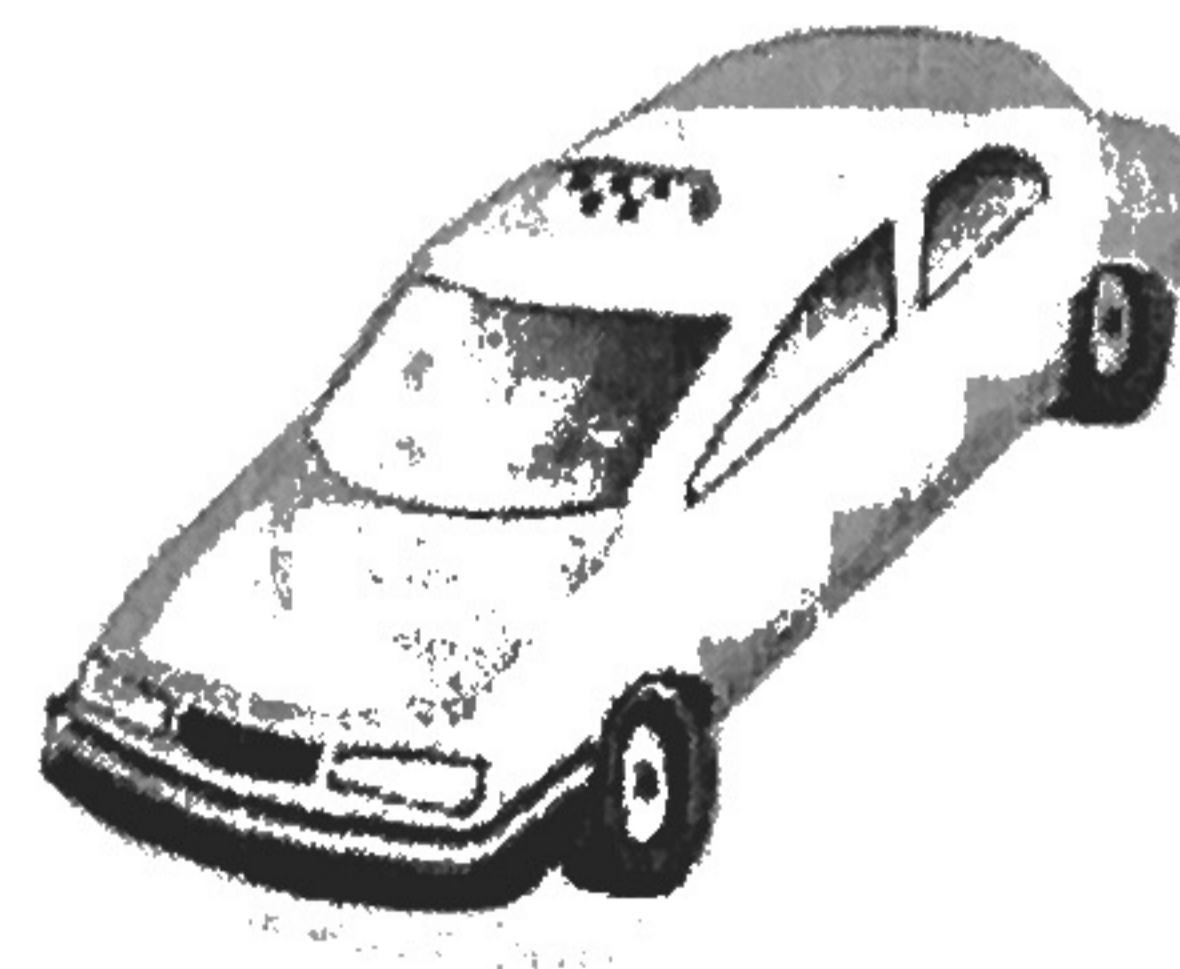
Cherie wants to go home in a taxi.

She lives 7 miles away.

The taxi firm charges \$4 plus \$1.50 per mile.

How much will the fare be?

Explain how you figure this out.



Q2. Ellie

Ellie is buying greeting cards.

The cards cost \$0.80 each.

She wants to buy 13 cards.

How much will she pay the store clerk?

Explain how you figure this out.



Q3. Dexter

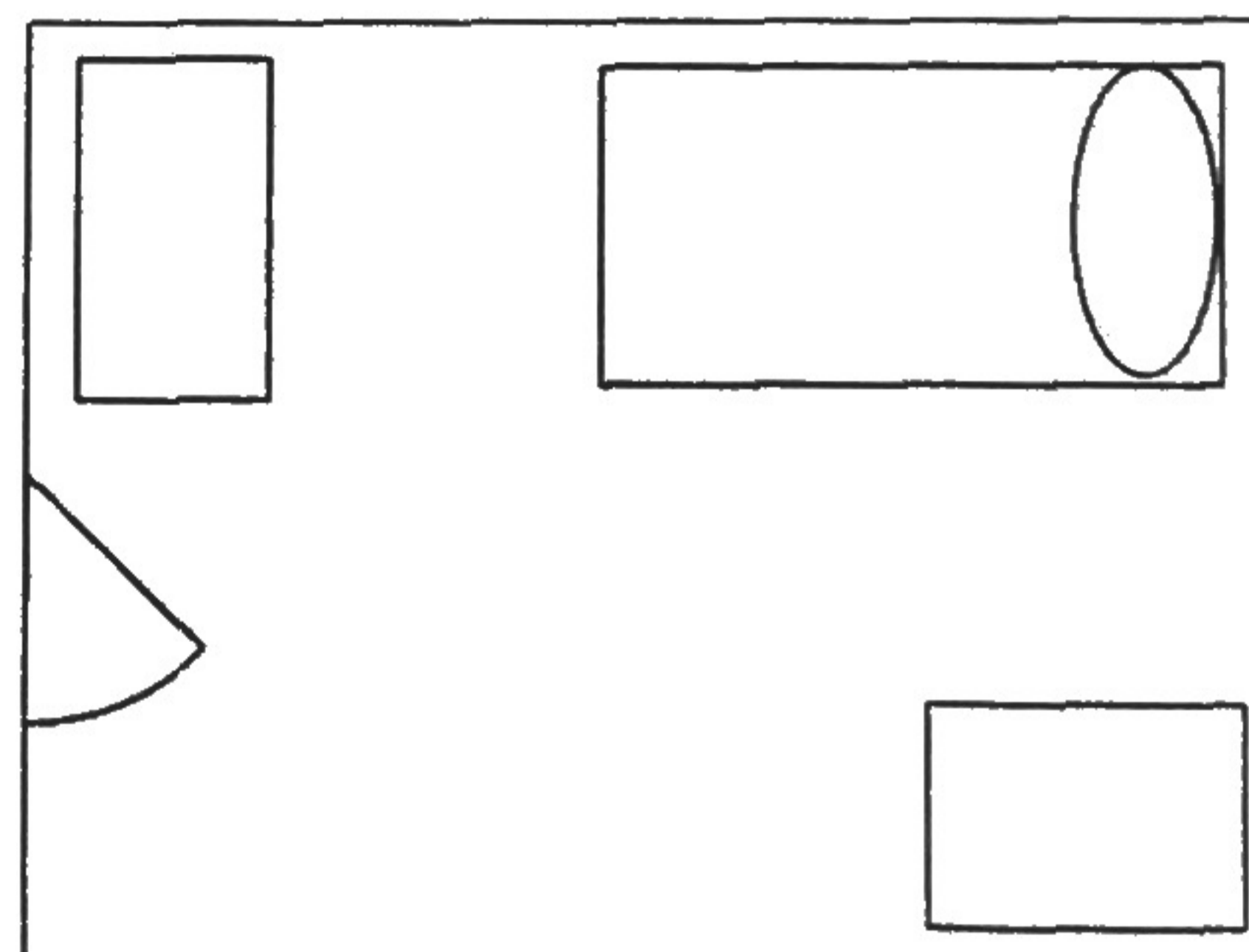
Dexter makes a scale drawing of his room.

In real life, the room is 10' wide and 12' 6" long.

In Dexter's drawing, the room is 4" wide.

What measure should the length be?

Explain how you figure this out.



Q4. Fred

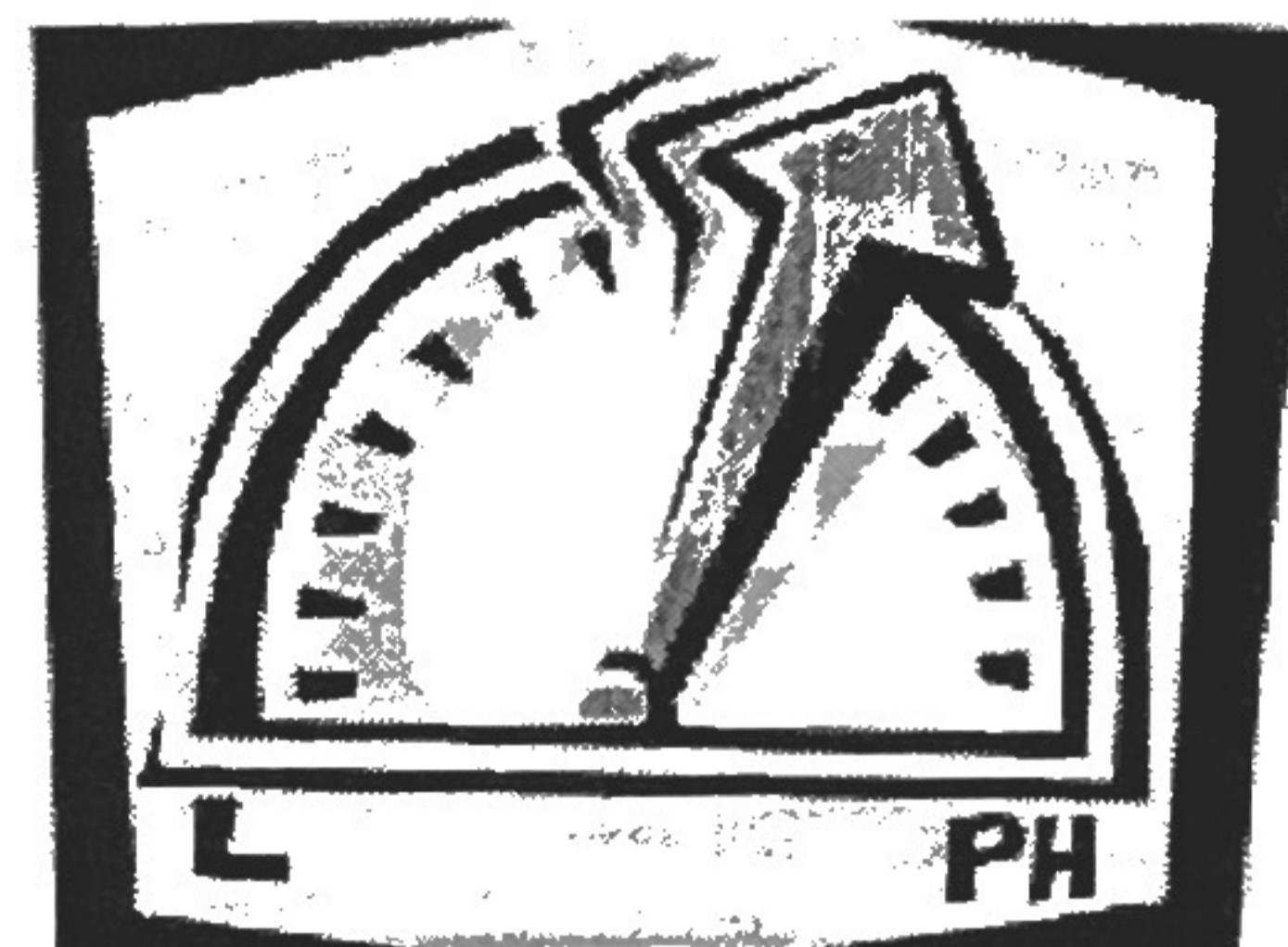
Fred lives on the 16th floor.

The elevator goes up one floor each 10 seconds.

It stops at the fifth floor for 1 minute for people to get out.

How long does it take Fred to get to the 16th floor?

Explain how you figure this out.



Q5. Here are some statements about the math in Q1 to Q4 above.

For each question, decide which statements are **true**. Explain your answers.

**If you double one quantity,
you double the other.**

**The ratio:
first quantity : second quantity
is always the same.**

	If you double one quantity, you double the other.	The ratio: first quantity : second quantity is always the same.
Q1 Cherie	Distance, Cost	Distance : Cost
Q2 Ellie	Number of cards, Cost	Number of cards : Cost
Q3 Dexter	Length on drawing, Length in room	Length on drawing : Length in room
Q4 Fred	Time, Floor the lift has reached	Time : Floor the lift has reached